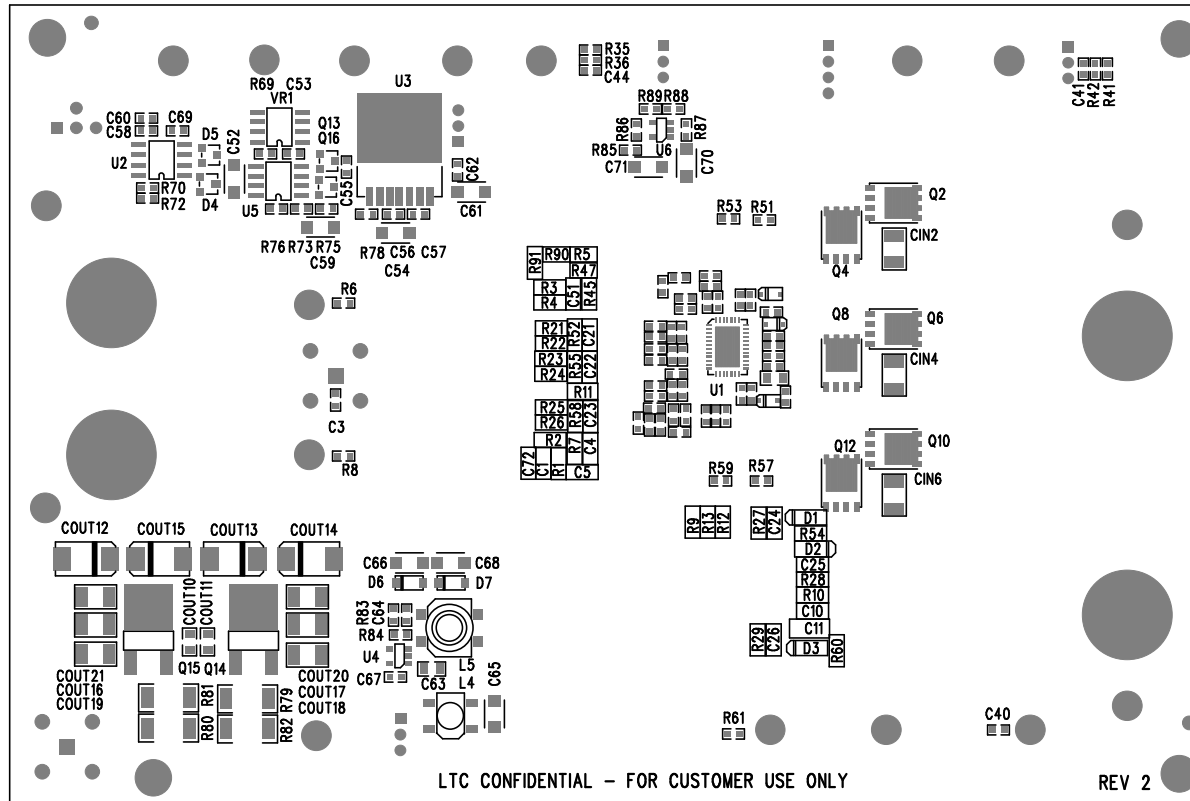


| REVISION HISTORY | | | | |
|------------------|-----|-------------|---------|----------|
| ECO | REV | DESCRIPTION | APPR | DATE |
| - | 2 | PRODUCTION | JIAN LI | 03-22-10 |




LTC CONFIDENTIAL - FOR CUSTOMER USE ONLY

REV 2

DATE: 03-22-10
HIGH CURRENT 3-PHASE SINGLE OUTPUT STEP-DOWN SUPPLY
DC1530A-LTC3829EUF
LINEAR TECHNOLOGY

Bottom Assembly Drawing

| APPROVALS | |  1630 MCCARTHY BLVD MILPITAS, CA 95035 PH: (408)432-1900 www.linear.com LTC CONFIDENTIAL- FOR CUSTOMER USE ONLY | |
|--------------|---------|--|--------------------|
| PCB DES. | A.K. | | |
| APP ENG. | JIAN L. | TITLE: BOTTOM ASSEMBLY DRAWING HIGH CURRENT 3-PHASE SINGLE OUTPUT STEP-DOWN SUPPLY | |
| | | SIZE | IC NO. LTC3829EUF |
| | | N/A | DEMO CIRCUIT 1530A |
| SCALE = NONE | | FILENAME: | DC1530A-2.PCB |
| | | SHT | 2 of 2 |